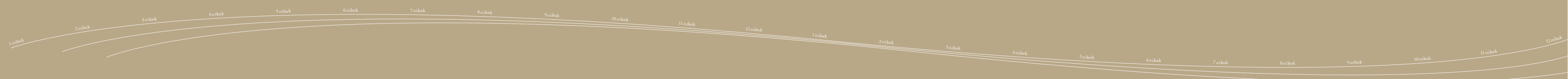




... when **WAKING UP** in the morning. When the first rays of the sun reveal the spectacular beauty of this jewel of the South Seas. Dreamlike panoramic views soften the farewell from the land of dreams. And only a few gentle bird songs disturb the privacy of your own **RESIDENCE**.





... IN THE MORNING.
When the Pacific welcomes the day with its dazzling kaleidoscope of green and blue shades, a soft breeze carries along the fragrance of exotic flowers and fruits and a jump into the private pool or a horse ride along the beach promise pure joy of living.



1 o'clock 2 o'clock 3 o'clock 4 o'clock 5 o'clock 6 o'clock 7 o'clock 8 o'clock 9 o'clock 10 o'clock 11 o'clock 12 o'clock



1 o'clock 2 o'clock 3 o'clock 4 o'clock 5 o'clock 6 o'clock 7 o'clock 8 o'clock 9 o'clock 10 o'clock 11 o'clock 12 o'clock



... **AT LUNCHTIME.** When guests are spoiled for choice. The wide range of culinary choice on Laucala fulfils every wish at all times, regardless of whether you're dining in style in the elegant Plantation House Restaurant, authentic Asian delicacies in the Seagrass Restaurant, avant-garde finger food in the Pool Bar, or a lively barbecue on the beach, or a romantic dinner in the privacy of your own residence.

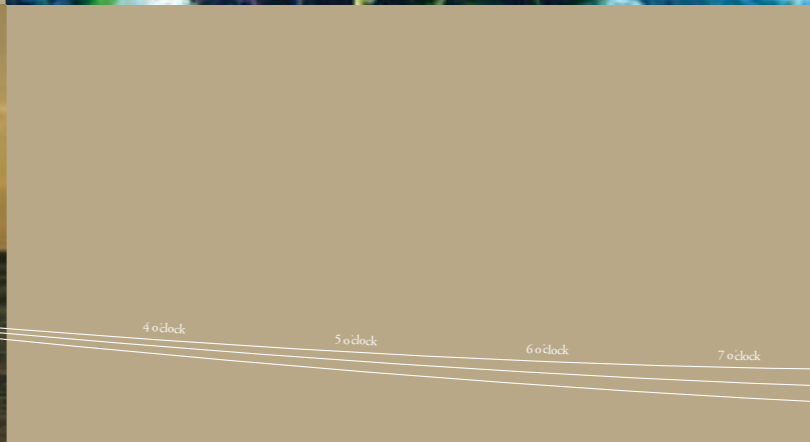
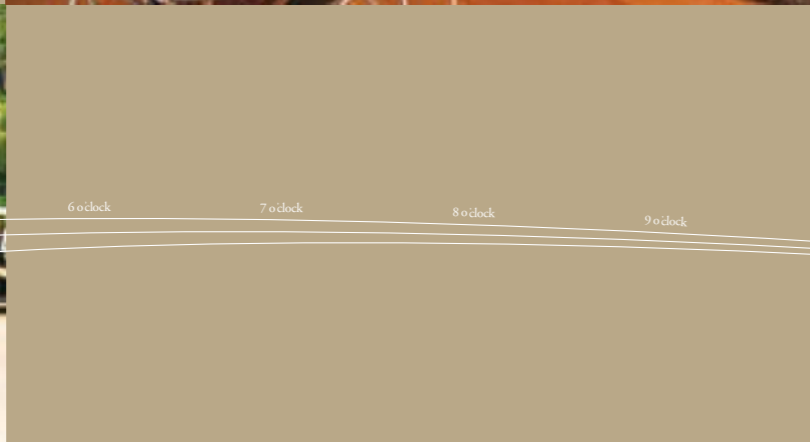


1 o'clock 2 o'clock 3 o'clock 4 o'clock 5 o'clock 6 o'clock 7 o'clock 8 o'clock 9 o'clock 10 o'clock 11 o'clock 12 o'clock 1 o'clock 2 o'clock 3 o'clock 4 o'clock 5 o'clock 6 o'clock 7 o'clock 8 o'clock 9 o'clock 10 o'clock 11 o'clock 12 o'clock



... **ALL DAY LONG.** When it comes to sports, activities show Laucala Island from its most ethereal side. Diving and snorkelling in the unique underwater world of the Pacific Ocean, sailing, surfing, rain forest tours, horse riding, game fishing, golfing on the 18-hole championship course or yoga – in fact everything is possible on Laucala ... all day long.



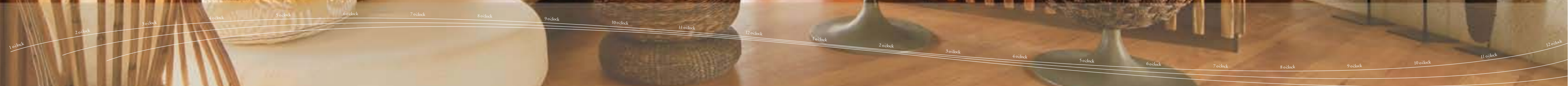




1 o'clock 2 o'clock 3 o'clock 4 o'clock 5 o'clock 6 o'clock 7 o'clock 8 o'clock 9 o'clock 10 o'clock 11 o'clock 12 o'clock



... in the wonderful **SPA**.
When the wellness expert's
magic hands open up the
energy centres of your body.
And the specially designed
relaxation remedies made
from the island's natural
resources lets your soul
float on cloud nine.





1 o'clock

2 o'clock

3 o'clock

4 o'clock

5 o'clock

6 o'clock

7 o'clock

8 o'clock

9 o'clock

10 o'clock

11 o'clock

12 o'clock

1 o'clock

2 o'clock

3 o'clock

4 o'clock

5 o'clock

6 o'clock

7 o'clock



... IN THE EVENING.

When the horizon joins the ocean and Laucala Island intoxicates all your senses with its nocturnal sea of lights. Because then the elixir of spectacular locations, the excellent cuisine and out-of-the-ordinary pleasures are shown from their most magical side. Whether you're enjoying a romantic Sundowner in the Rock Lounge, a fine wine in the Plantation House, fruity cocktails at the elegant pool bar, or a sparkling drink in the private outdoor lounge, then, in the poetic words of a Fijian folk song, „ ... **on Laucala Island, blissful hours last forever ...** “

1 o'clock 2 o'clock 3 o'clock 4 o'clock 5 o'clock 6 o'clock 7 o'clock 8 o'clock 9 o'clock 10 o'clock 11 o'clock 12 o'clock 1 o'clock 2 o'clock 3 o'clock 4 o'clock 5 o'clock 6 o'clock 7 o'clock 8 o'clock 9 o'clock 10 o'clock 11 o'clock 12 o'clock



1 o'clock

2 o'clock

3 o'clock

4 o'clock

5 o'clock

6 o'clock

7 o'clock

8 o'clock

9 o'clock

10 o'clock

11 o'clock

12 o'clock

1 o'clock

2 o'clock

3 o'clock

4 o'clock

5 o'clock

6 o'clock

7 o'clock

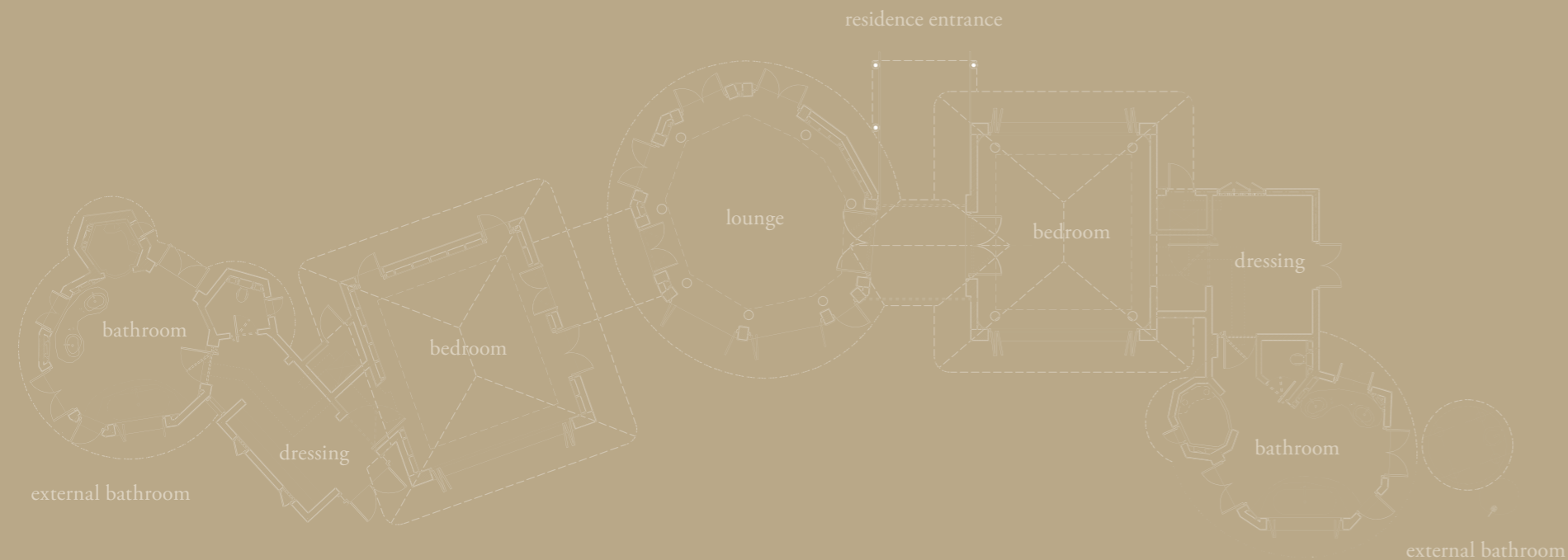
8 o'clock

9 o'clock

10 o'clock

11 o'clock

12 o'clock



PLANTATION RESIDENCES Located on the old Copra Plantation with perfectly lined up palm tree formations which give the impression of an endless portrait. By entering this private place through your own main gate you have a spectacular view upon the open sea. A spacious garden with rich green vegetation, tropical flowers and different elements of nature guides you to your Fijian style villa. The high ceiling indoor living areas provide a lot of space for privacy and individuality. Feel free to open all your windows and doors and enjoy a light breeze of the open sea. In your private outdoor living pavilions you take time out to breathe. Enjoy your outdoor stone tub, use the al fresco shower, swim in your private infinity pool or choose one of the secluded locations on your private beach where you can relax in the cool shade.



SEAGRASS RESIDENCES Surrounded in a tropical jungle, and Sea Grass Bay you will experience this residence camouflaged by the mature natural vegetation. The sandy beach reaches directly into your outdoor living pavilions. Feel the soft sand between your toes and enjoy the shady giant palm trees. The organic pool formation blends seamlessly into the ocean view. Wooden decks, rocks and daybeds create a tropical outdoor living and dining experience. Inside you feel generous space with individual places during the day and night. Read a book in your living room or wake up in the morning by listening to the singing birds and walk right through your open doors into the sandy beach. Treat yourself in the wooden bath tub as a center piece of the bathroom. This residence gives the ideal impression of a cast away location.



PLATEAU RESIDENCES These hidden residences are situated on the Nawi hill overlooking the indigo lagoon with spectacular cliff top views of neighboring islands. Local flora and fauna is integrated into the spacious indoor and outdoor Fijian designed residences. With only four residences in the plateau region, this would be a perfect choice as a secluded area for family and friends reunion. Specially chosen items decorate the indoor living areas and cozy bedrooms. An oversized wooden bath tub as well as the oversized showers complete your bathroom experience. Outside you inhale the fragrances of the tropical flora. Let your eyes drift away by the colorful wild flowers surrounding you on your private outdoor pavilions. Take a plunge into your pool, glide through the refreshing light blue water and enjoy the panoramic view of the open sea. Feel the cool breeze of the ocean during the whole day with a constant shade above you.



HILLTOP RESIDENCE The private driveway will take you directly to one of the most secluded and highest location on Laucala Island lending itself to a sweeping 360 degree view over the turquoise water. The Hilltop residence is a resort within itself with a master residence and two individual guest villas. For your own privacy you will relax on individually located sun decks centered by the natural setting of an infinity edge pool with an invigorating Jacuzzi. A lap pool overlooking Laucala Bay and the neighboring islands gives you and your guests that feeling of individuality. Each residence is specially designed for everyone's comfort. You can enjoy in villa dining from your private kitchen, have relaxing bobo massage, an undisturbed sunset and sunrise vista or call the concierge to arrange any special activity for you. Actually you never have to leave this peacefully hidden oasis. It's the perfect place to hide away from the rest of the world and be yourself.



OVERWATER RESIDENCE The “Wai” means water in the Fijian language. You will reach this unique two bedroom residence not only by driving through a lush garden, also approaching your overwater villa from the sea. This residence has its own marina for a discreet arrival by your own boat. Suddenly you are on the overwater residence. Your five senses will experience immediately this exclusive character of the location. The special sun decks and pavilions located on different levels which invite you to relax and dine over the water where ever you wish to stay. Your private pool is built into a cliff next to the pavilion decks. You can swim in the pool and feel the magnificent spray of the ocean. Open all the doors and windows to capture the sounds of the soothing ocean. Watch the tides come and go as well as admire the colorful coral surrounding you. Just imagine having no other villas within your area as you enjoy this two bedroom residence built on stilts above the indigo sea.



PENINSULA RESIDENCE Imagine you would have just an island of your own, total privacy nestled into the headland with an uninterrupted ocean view. In the Fijian language “Udu” stands for the edge, where the Babylonian style suspension bridges lead you to your indoor and outdoor living pavilions. This one bedroom residence provides several living areas on different levels. On top of this location you will find the bedroom with a magnificent view over the South Sea. A highlight of the open view bathroom is the huge bathtub which is built into a solid rock. Your living room is offering a direct access into the infinity pool overlooking the panoramic bay and indigo sea. Feel the ocean by opening all doors and windows. Staircases will lead you down the cliff to your private hidden beach where you may discreetly enter by your own boat. Experience fine dining with your own chef in your favorite location and celebrate something special. If you are looking for your secluded hideaway experience this spectacular residence is offering it.



See you on Laucala Island

