



# REVA

HOTEL REVA TAHITI



South Pacific Management

HOTEL MANAGEMENT COMPANY

*Pacific's Hidden Paradise*





## OPENING :

November 2025

## SITUATION :

In the heart of Papeete, at the corner of Rue des Remparts and Avenue Prince Hinoi.

5 minutes walk from the market and 10 minutes from the ferry terminal and ferry station for Moorea.

## STYLE :

Urban, modern decoration with Polynesian influences and integration of eco-responsible principles.







## GENERAL DESCRIPTION

### 43 ROOMS & SUITES :

- 6 City Rooms
- 24 City Studios
- 9 Reva Studios
- 3 Horizon Junior Suites
- 1 Two-Bedroom Apartment





# HOTEL SERVICES

- Reception on the ground floor
- Luggage
- Check in 14h / Check out 11h
- Catering: only breakfast service served as a buffet
- Self-service washing machines on the top floor
- Relaxation area
- Co-working space with drinks and snacks vending machine
- Meeting room
- Connecting rooms available
- A room equipped with disabled facilities
- Baby cots on request
- Water fountain, ice machine on each floor
- Drinks and snacks vending machine on each floor



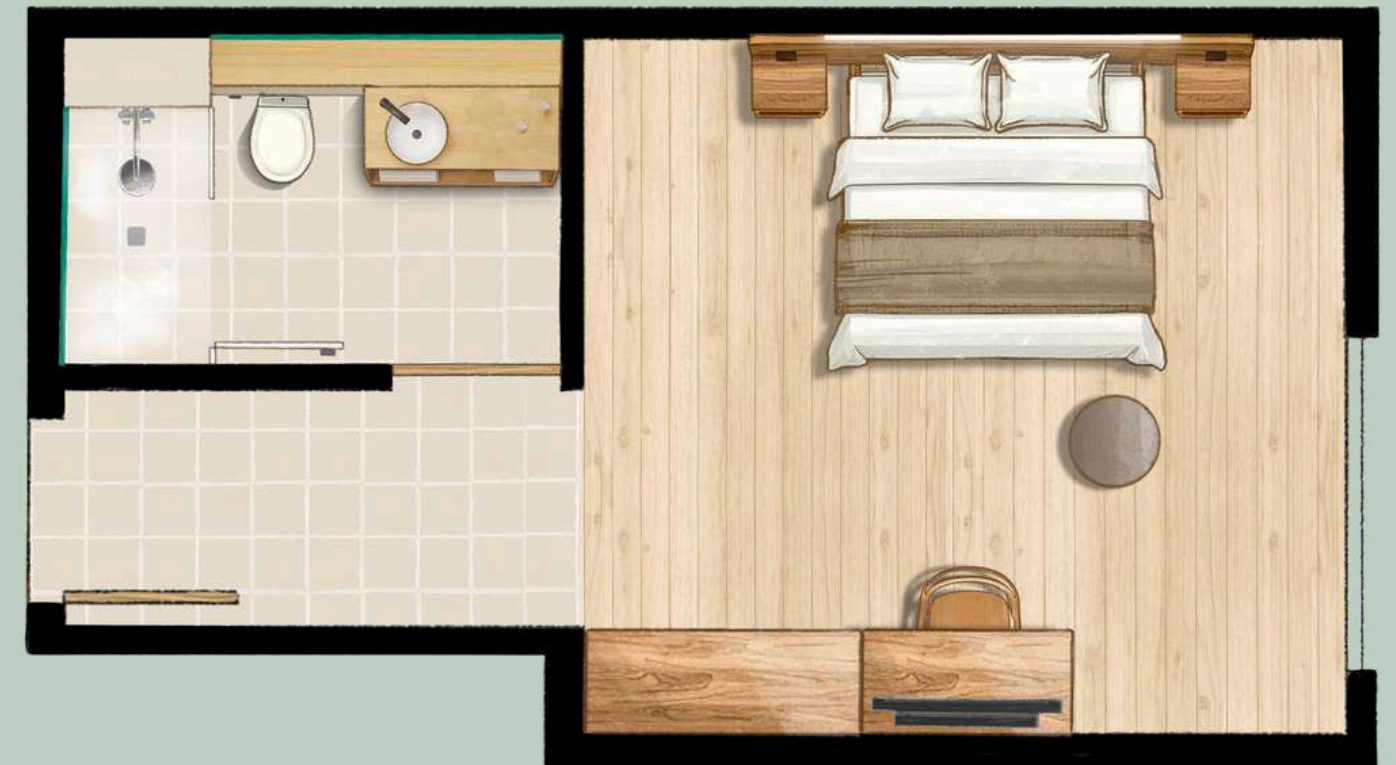


## THE CITY ROOM (BETWEEN 237 AND 258FT<sup>2</sup>)

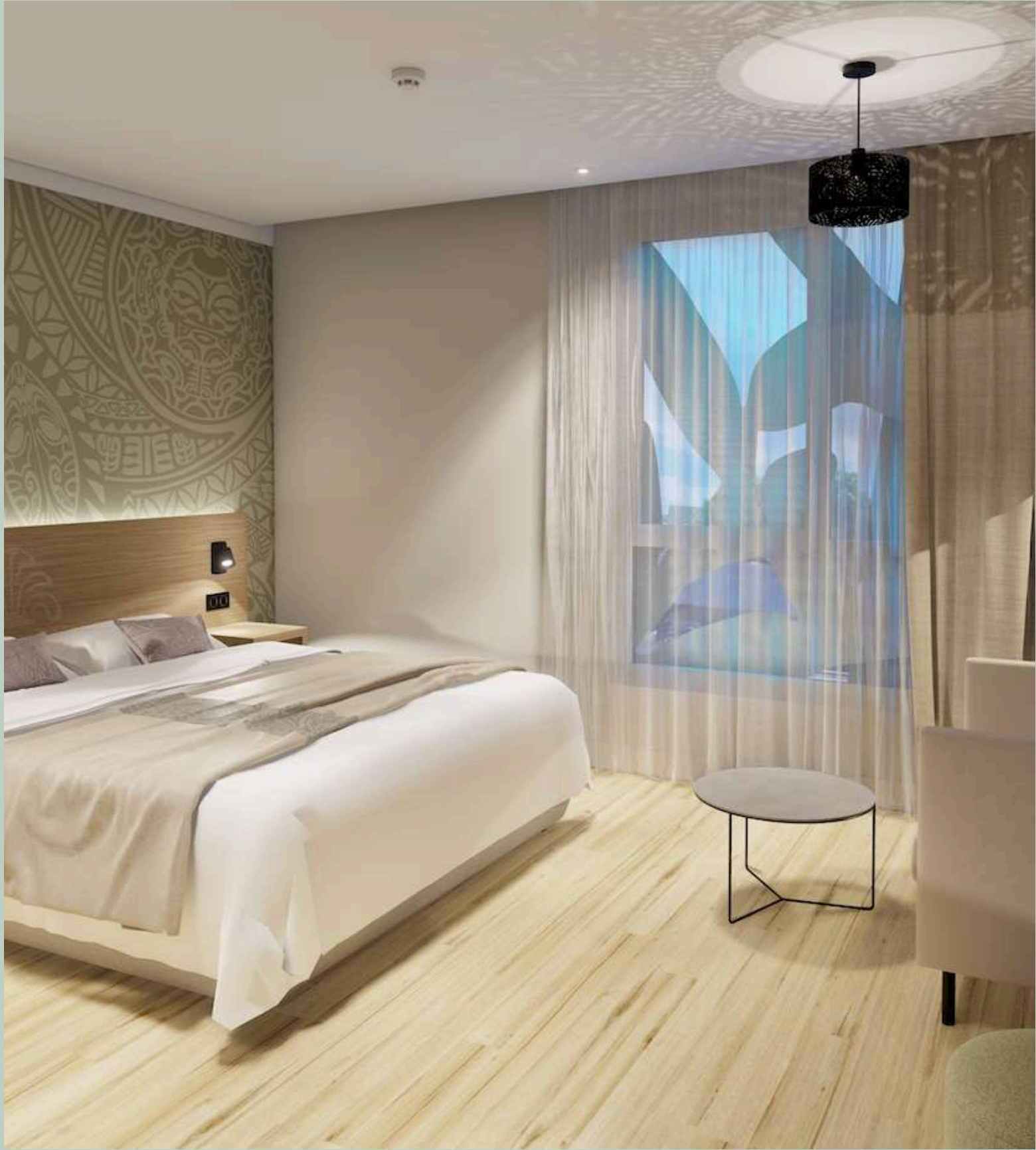
x 6 units

### FEATURES :

- 1 bed « king size » 180 x 200
- Connecting rooms with a City Studio or a Reva Studio
- Capacity: 2 adults
- Air conditioning
- No kitchenette
- Tea/coffee making facilities
- Bathroom with shower
- Satellite TV, telephone, wifi
- Ironing board and iron, individual safe









## THE CITY STUDIO (BETWEEN 291 AND 377FT<sup>2</sup>)

x 24 units

### FEATURES :

- 1 bed « queen size » 160 x 200 + 1 armchair bed 100 x 180
- Connecting rooms with a City Room
- Capacity: 3 people
- Air conditioning
- Kitchenette with microwave, sink, small fridge, kettle, plates, glasses and cutlery
- Tea/coffee making facilities
- Desk and chair
- Bathroom with shower
- Satellite TV, telephone, wifi
- Ironing board and iron, individual safe







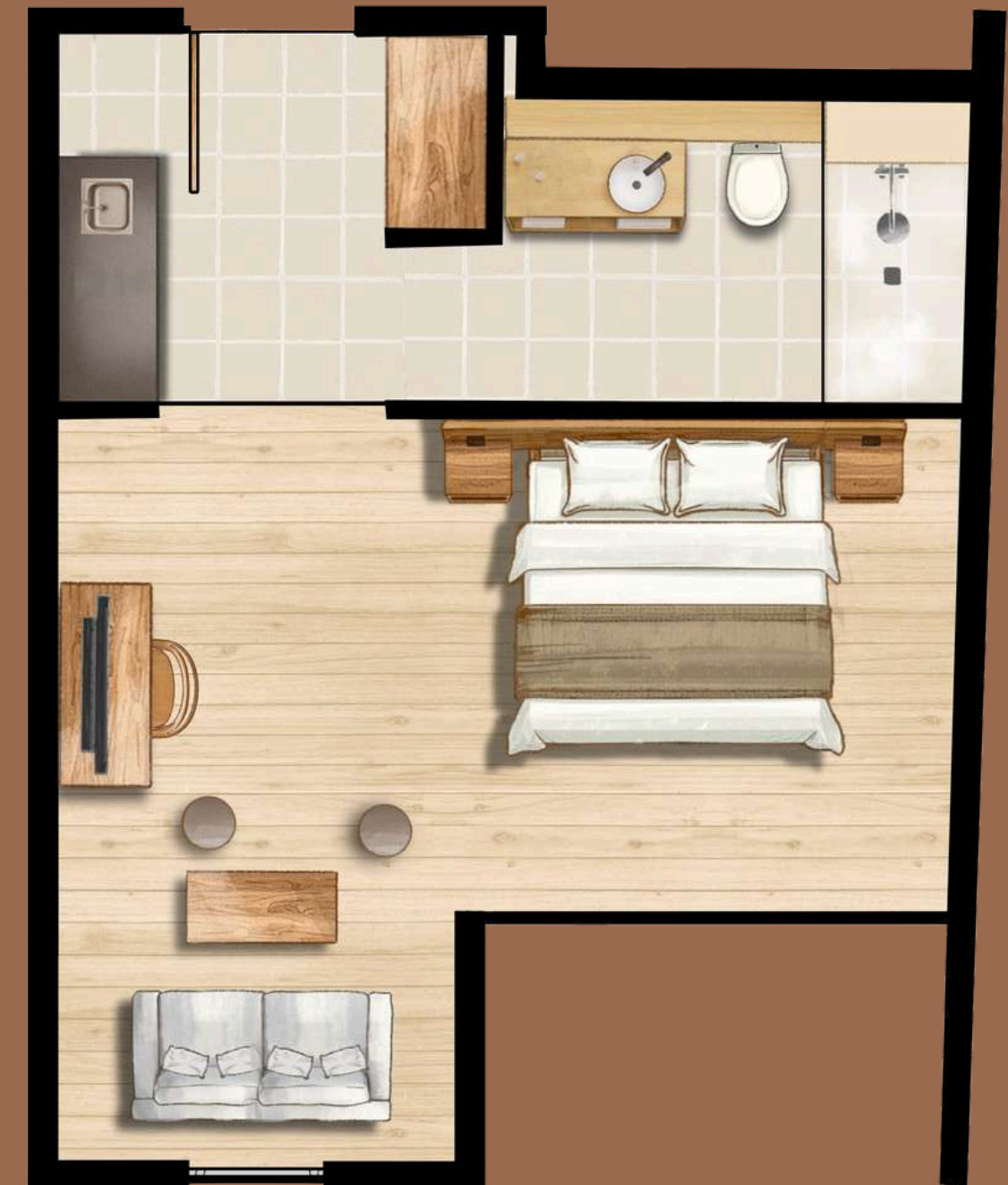


## THE REVA STUDIO (BETWEEN 291 AND 377 FT<sup>2</sup>)

x 9 units

### FEATURES :

- 1 bed « queen size » 160 x 200 + 1 sofa bed 140 x 200
- Connecting rooms with a City Room
- Capacity: 4 people
- Air conditioning
- Kitchenette with microwave, sink, small fridge, kettle, plates, glasses and cutlery
- Tea/coffee making facilities
- Desk and chair
- Bathroom with shower
- Satellite TV, telephone, wifi
- Ironing board and iron, individual safe









# THE HORIZON JUNIOR SUITE (BETWEEN 355 AND 430 FT<sup>2</sup>)

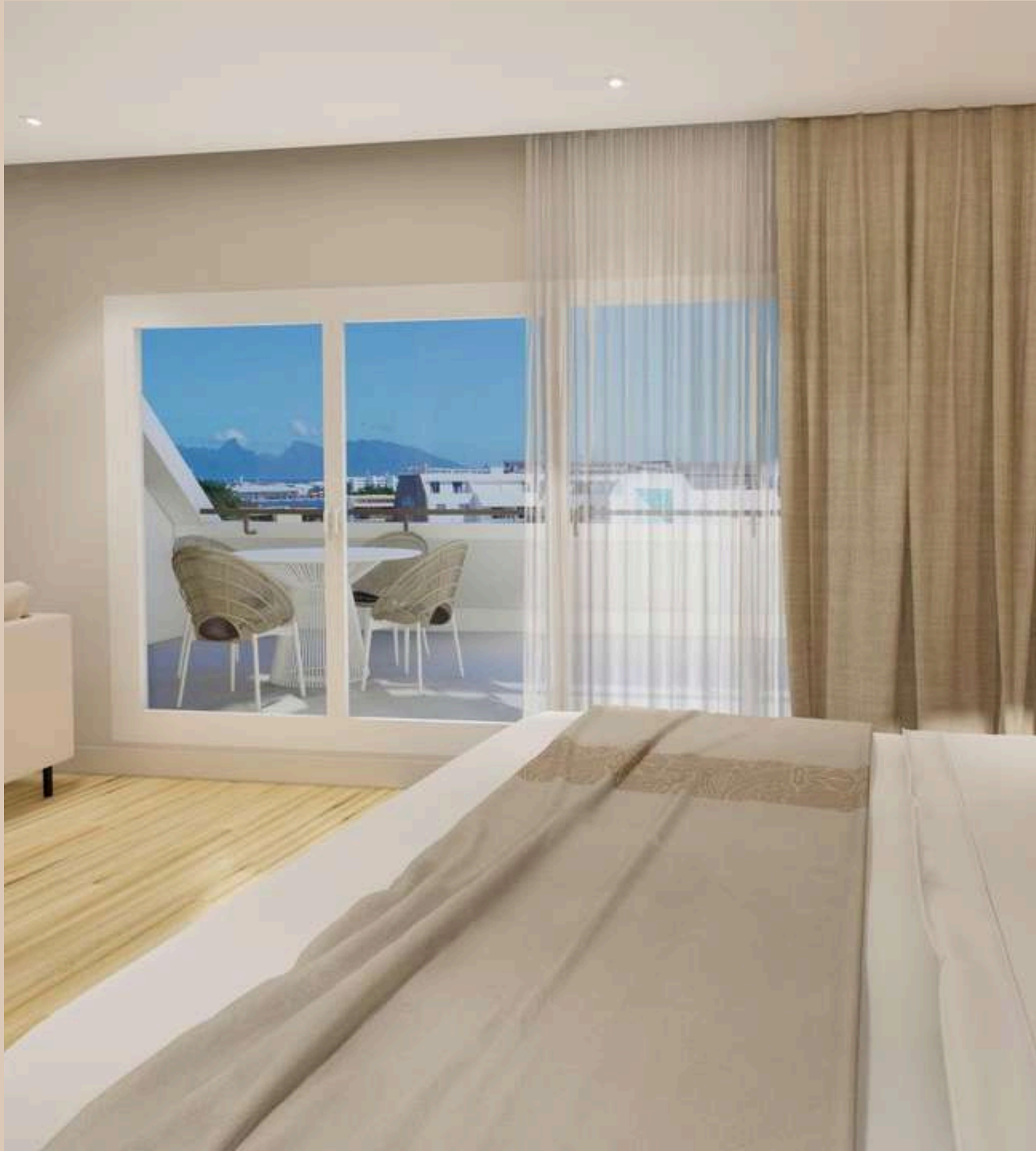
x 3 units

## FEATURES :

- 1 bed « king size » 180 x 200 + 1 armchair bed 100 x 180
- Capacity: 3 people
- Air conditioning
- Terrace of 10 to 14 m<sup>2</sup> with table and chairs
- Kitchenette with microwave, sink, small fridge, kettle, plates, glasses and cutlery
- Tea/coffee making facilities
- Desk and chair
- Bathroom with shower
- Satellite TV, telephone, wifi
- Ironing board and iron, individual safe









# THE TWO-BEDROOM APARTMENT (474 FT<sup>2</sup>)

x 1 unit

## FEATURES :

- Apartment with 2 bedrooms
- 2 Beds « king size » 180 x 200 + 1 sofa bed 140 x 200
- Capacity: 4 adults + 2 children
- Air conditioning
- 23 m2 terrace with table and chairs
- Kitchenette with microwave, sink, small fridge, kettle, plates, glasses and cutlery
- Tea/coffee making facilities
- Desk and chair
- Bathroom with shower
- Satellite TV, telephone, wifi
- Ironing board and iron, individual safe











## KEY SELLING POINTS

- A location in downtown Papeete, ideally located near the ferry terminal, the food trucks, the Papeete market, shops and restaurants
- A tropical-contemporary style for an independent clientele
- Comfortable rooms, offering all modern amenities
- Attractive rates with offers including COMBO with Moorea Niu Beach and Manava hotels
- Target customers: leisure customers in transit, cruise passengers, CE groups, business.



# THANK YOU

**Contacts SPM Sophie Bessou**

[dosm@spmhotels.pf](mailto:dosm@spmhotels.pf)

**40 50 84 62**

